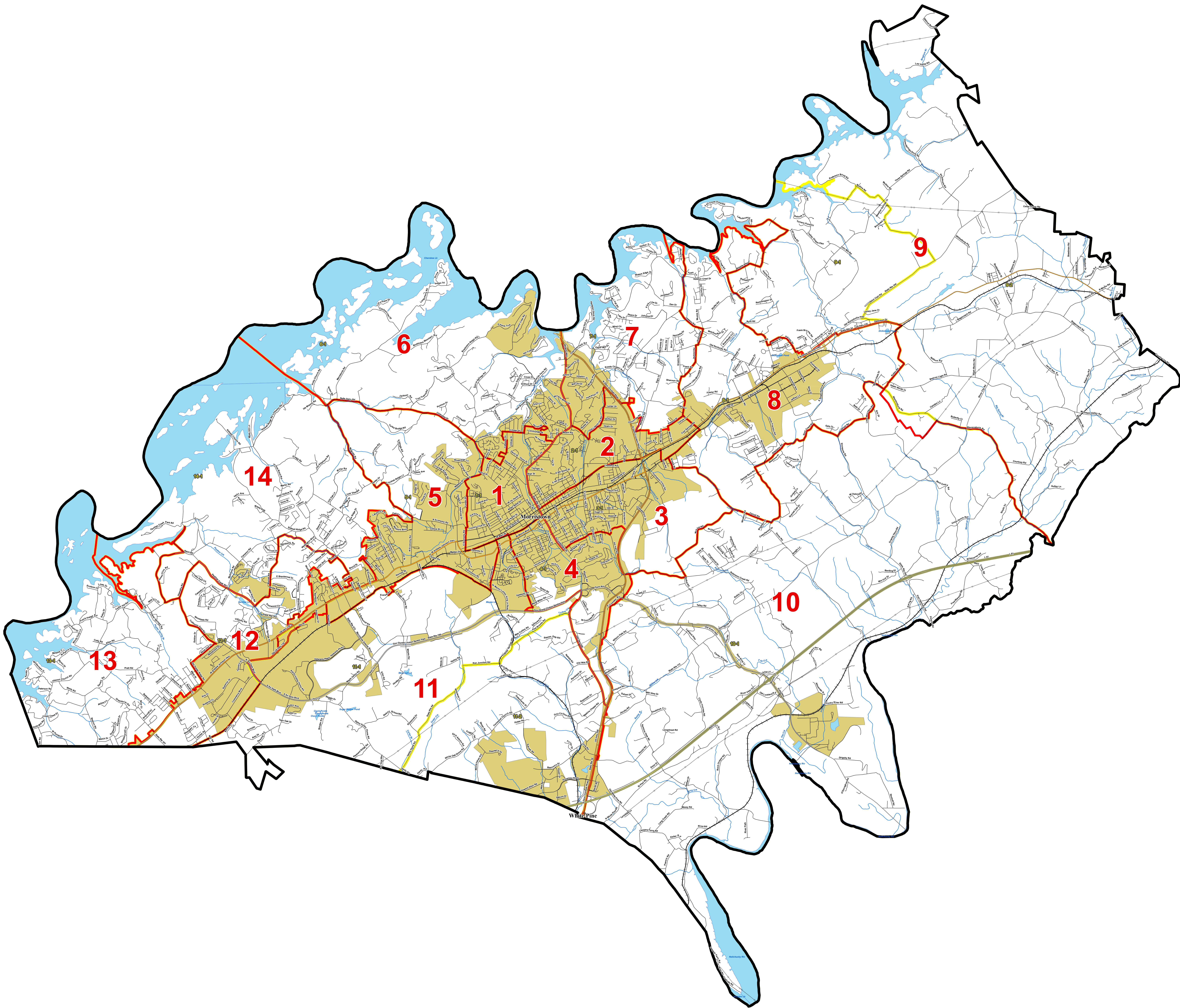
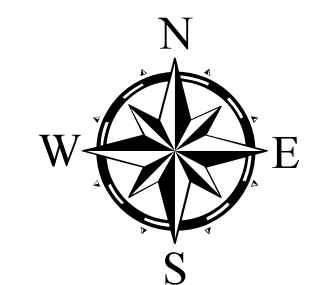


Current County Commission Districts and Voting Precincts



- Interstates
- U.S. Highway
- State Highway
- Local Roads
- Railroads
- Creeks / Stream
- Powerline
- County Commission Districts
- Voting Precinct
- Lakes / Rivers
- City, Town**
- Morristown
- White Pine
- County Commission District Number
- Precinct ID Number



2020 Total Population 64,499

2020 Population by District
Overall Range [4.9- (-4.5)] = 9.4%
Optimum Population is 4,607 per District

| DISTRICT | NUMCONS | TOTALPOP | DEVIATION | %DEVIATION | WHPOP | %WHITE | BLPOP | %BLACK | OTHERPOP | %OTHER | HSPOP | %HISPANIC |
|----------|---------|----------|-----------|------------|-------|--------|-------|--------|----------|--------|-------|-----------|
| 1 | 1 | 4,429 | -176 | -3.9% | 2,885 | 64.7% | 421 | 9.3% | 1,143 | 25.9% | 1,193 | 26.9% |
| 2 | 1 | 4,388 | -209 | -4.8% | 2,928 | 66.8% | 271 | 6.2% | 1,189 | 27% | 1,187 | 27% |
| 3 | 1 | 4,488 | -121 | -2.6% | 3,088 | 68.7% | 224 | 5% | 1,182 | 26.2% | 1,190 | 26.3% |
| 4 | 1 | 4,412 | -165 | -3.7% | 2,771 | 62.8% | 355 | 8.0% | 1,286 | 29.1% | 1,202 | 27.1% |
| 5 | 1 | 4,432 | -185 | -4% | 3,431 | 77.4% | 135 | 3.0% | 866 | 19.4% | 653 | 14.8% |
| 6 | 1 | 4,630 | 22 | 0.5% | 3,264 | 70.5% | 303 | 6.5% | 1,162 | 25.1% | 1,288 | 27.9% |
| 7 | 1 | 4,771 | 164 | 3.5% | 3,087 | 64.7% | 89 | 1.8% | 795 | 16.6% | 643 | 13.3% |
| 8 | 1 | 4,666 | 60 | 1.3% | 4,081 | 87.5% | 121 | 2.6% | 464 | 10.0% | 250 | 5.4% |
| 9 | 1 | 4,738 | 129 | 2.8% | 4,413 | 93.1% | 64 | 1.4% | 261 | 5.5% | 128 | 2.7% |
| 10 | 1 | 4,786 | 181 | 3.9% | 4,217 | 88.1% | 64 | 1.3% | 407 | 8.5% | 225 | 4.7% |
| 11 | 1 | 4,668 | -51 | -1.1% | 3,642 | 78.2% | 162 | 3.5% | 752 | 16.1% | 622 | 13.1% |
| 12 | 1 | 4,811 | 224 | 4.7% | 4,124 | 85.7% | 77 | 1.6% | 609 | 12.5% | 399 | 8.4% |
| 13 | 1 | 4,692 | 40 | 0.9% | 4,218 | 90.1% | 43 | 0.9% | 391 | 8.4% | 172 | 3.8% |
| 14 | 1 | 4,723 | 116 | 2.5% | 4,124 | 87.3% | 107 | 2.3% | 492 | 10.4% | 236 | 5% |

2020 Population by Precinct

| VOTING PRECINCT | TOTALPOP | TOTALPOP% |
|-----------------|----------|-----------|
| 1-1 | 4,429 | 6.9% |
| 1-2 | 4,861 | 7.5% |
| 1-3 | 3,058 | 4.7% |
| 1-4 | 1,519 | 2.3% |
| 1-5 | 4,831 | 7.5% |
| 1-6 | 4,723 | 7.3% |
| 1-7 | 4,368 | 6.8% |
| 1-8 | 4,488 | 6.9% |
| 1-9 | 4,412 | 6.8% |
| 1-10 | 4,626 | 7.2% |
| 1-11 | 4,559 | 7.1% |
| 1-12 | 4,771 | 7.4% |
| 1-13 | 4,692 | 7.3% |
| 1-14 | 2,075 | 3.2% |
| 1-15 | 2,000 | 3.1% |



Cordell Hull Building
425 Rep. John Lewis Way N | Nashville, Tennessee 37243-1402
P: 615.401.7773 | F: 615.532.5279

*Precincts may change after the publication of this map.
Contact the Division of Property Assessments at 615.401.7773
or visit apps.comptroller.tn.gov/dpamaps/redistrict/counties
for current information.*

Created on: 12/21/2021